

What is TMS?

TMS support the fastest and most accurate dispatching plan based on master data and business rules. It has functions such as order partition, quantity of goods distribution by carrier, load reduction, load addition etc. Also, as integrated service is provided with transport control system, statistical data such as departure/arrival schedule rate, loading rate and operating rate are available.

ZINi TMS Features

01

Possess technology of dispatching management system



Have own technology which provide many functions: restricted entry of delivery address, overloading prevention, order partition, quantity distribution, loading addition/reduction as well as transport/delivery optimization.

02

Standardize distribution operating work and integrated management



Have transport settlement and temporary hired transport settlement function based on standard loading capacity by transport, standard mileage, optimal distance etc.

03

Manage location and temperature for cold chain in real time



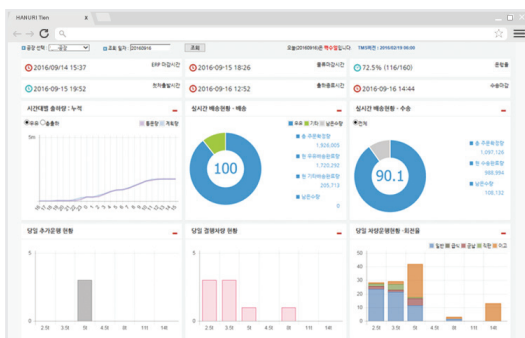
Real-time temperature and location service allows immediate checking for location and temperature when delivering temperature-sensitive products such as refrigerated/frozen foods and medicines. This also enhances systematic management for easy delivery by tracking past history and transport route data.

04

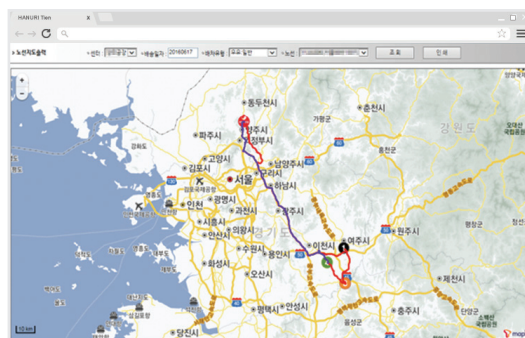
Simplify work through smartphone connection



Send dispatching notification and day off management to transport driver as well as departure notification and tracking service to agency and customer. This helps to minimize work errors through quick and accurate communication in frequently changing logistics market.



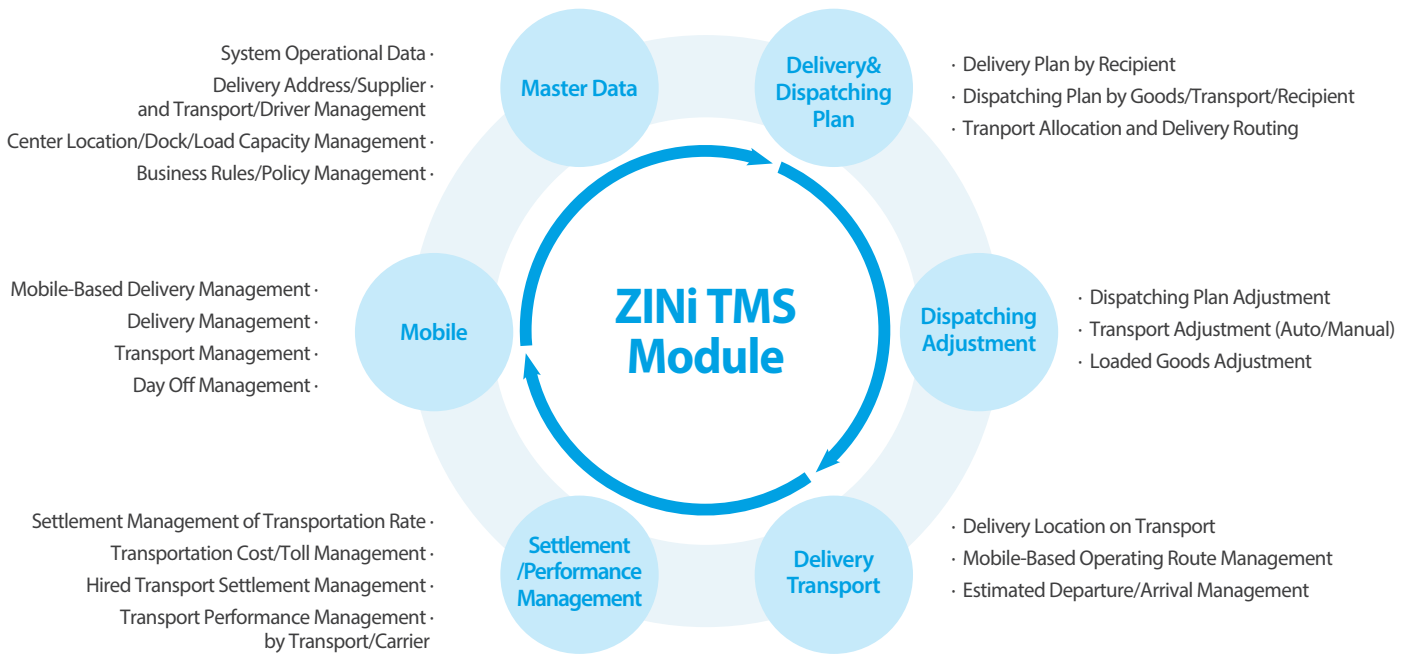
Dashboard



Delivery Route Map



ZINi TMS Module Diagram



ZINi TMS Application Efficiency

1 Speed



• Support quick and accurate work

- Reduce time by quick and accurate dispatching plan.
- Increase transport turnover/loading ratio and due date of payment.
- Decrease manpower by efficient operating workforce.
- Enhance economic efficiency by providing operating route in real time.
- Reduce fuel cost by routing analysis of delivery route.
- Manage transport efficiency through KPI analysis.
- Improve management ability by standardizing work.
- Provide ease of use by managing policy selection of various works.

2 Visibility



• Secure visibility of dispatching/transport management

- Manage fair dispatching based on data.
- Order dispatching to driver and manage transport schedule via mobile.
- Monitor in real time through transport location control.

3 Changeability



• Customize user and extend functions

- Support user policy settings function by operational strategy.
- Support connection to transport location, temperature, and mileage control system.
- Provide interface method with ERP and various legacy.